



# TEK PANEL™ 460

Installation and User Manual

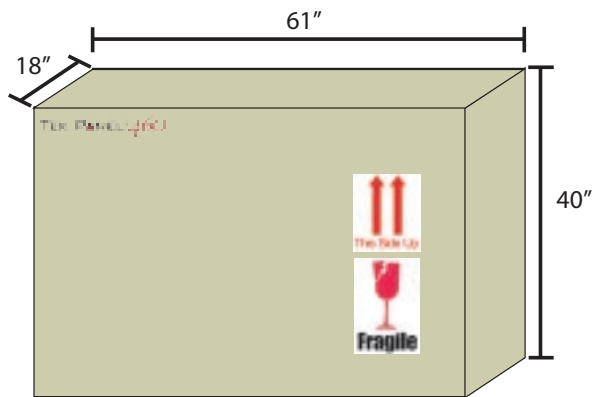
# Contents

I. Unpacking The Tek Panel 460 .....	3
II. Accessories Package (Cabling) .....	4
II. Accessories Package (Peripherals) .....	5
II. Accessories Package (Optional Cabling) .....	6
II. Accessories Package (Software & Manuals) .....	7
II. Accessories Package (Miscellaneous).....	8
III. Making the Connections (HID Wireless Receiver) .....	9
III. Making the Connections (Sound System).....	10
III. Making the Connections (AC Power).....	11
III. Making the Connections (Graphics Adapters) .....	12
III. Making the Connections (Network Connection).....	13
IV. TV Tuner/Monitor Controller Card .....	14
V. OSD (On Screen Display) .....	15
V. OSD (On Screen Display) Audio Menu .....	16
V. OSD (On Screen Display) Picture Menu .....	17
V. OSD (On Screen Display) Picture Menu .....	18
V. OSD (On Screen Display) Options Menu .....	19
V. OSD (On Screen Display) OSD and PIP Menu .....	21
V. OSD (On Screen Display) Video and TV Menu .....	22

# I. Unpacking The Tek Panel 460



Accessories



Tek Panel 460

There will be two (2) containers with your shipment:

- 1) Tek Panel 460
- 2) Accessories

If you purchased the Optional Speakers Upgrade package you will receive a third box containing your speakers. Standard speakers will ship in the accessories box.

Open and inventory the accessories package to ensure you have received all the parts.

You will want to have plenty of room to unpack your system.

**NOTE:** It is recommended that you have 2 people unpack the Tek Panel 460.

**NOTE:** If any items are missing please contact SALES @ 1-800-835-7278

## II. Accessories Package (Cabling)



USB Extension Cable

USB Extension Cable, used to increase the cable length for any USB device.



AC Power Cord

AC Power Cord, used to supply power to the Tek Panel 460.

**NOTE: If any items are missing please contact SALES @ 1-800-835-7278**

## II. Accessories Package (Peripherals)



Communicator Package



Klipsch 2.0 ProMedia Speakers

Communicator package includes wireless keyboard, mouse, presentation mouse, wireless receiver, and batteries for all the devices.

Klipsch ProMedia 2.0 Speakers (shown) or the optional upgrades (Klipsch ProMedia 2.1 or the 5.1 surround systems) will supply the audio for your favorite movies and games.

**NOTE: If any items are missing please contact SALES @ 1-800-835-7278**

## II. Accessories Package (Optional Cabling)

You will ONLY receive these cables if you purchased the ATI 9800 All-In-Wonder video card as an optional upgrade.



S-Video Cable



ATI Input Adapter



ATI Output Adapter



ATI Component Video Adapter



Composite Video Cable

S-Video Cable, used for connecting from your ATI Input Adapter, or the ATI Video Output Adapter.

ATI Input Adapter, used to watch movies on your Tek Panel 460 or record video from your VCR, camcorder, or other video component player.

ATI Output Adapter, used to display your PC output on TV and record your output on videotape.

ATI Component Video Adapter, used to display your PC output on a High Definition Television (HDTV).

Composite Video Cable, used for connecting from your ATI Input Adapter, or the ATI Video Output Adapter.

**NOTE:** If any items are missing please contact SALES @ 1-800-835-7278

## II. Accessories Package (Software & Manuals)

Included in your accessories package will be the following software discs:

- Motherboard software drivers
- Display drivers and software for your chosen graphics card
- Operating system disc

Also included will be user manuals for the motherboard, speakers and graphics card.

Software drivers for all your components will come pre-installed on your Tek Panel. If you ever require re-installation of USB, Firewire, ethernet or sound card drivers, you may use your motherboard software disc to do so.

**NOTE: If any items are missing please contact SALES @ 1-800-835-7278**

## II. Accessories Package (Miscellaneous)



Optional Sanus  
Wall Mounting Bracket  
Model VMPL50b

The wall mounting bracket is an optional accessory. If you purchased a wall mounting bracket, please refer to its specific installation instructions. A wall mounting bracket is used to securely attach your Tek Panel 460 to a fixed wall.



### III. Making the Connections (HID Wireless Receiver)



Figure 1

Locate the wireless receiver for the Human Interface Devices, ie. keyboard and mouse (see figure 1).

Insert the USB plug into one of the 4 USB ports on the back panel of your Tek Panel 460.

If your HID components (keyboard and/or mouse) are not responding as desired use the USB extension cable along with the receiver and relocate the receiver.

Please refer to the manual that came with the wireless keyboard and mouse for instructions on how to properly calibrate them.

**Note:** The HID wireless receiver has a range of up to 30 ft.

### III. Making the Connections (Sound System)



Klipsch 2.0 Pro Media Speakers  
(Standard)

Please refer to the Owner's Manual included with the speakers package for installation instructions.

### III. Making the Connections (AC Power)



Figure 1



Figure 2

Locate the AC power cord (see figure 1) and plug the female end into the AC power socket located on the rear of the Tek Panel 460 (see figure 2)

### **III. Making the Connections (Graphics Adapters)**

Please refer to the manual included with your specific graphics card for any necessary installation instructions for graphics accessories or input/output adapters.

**Note: For the best results use S-Video.**

### III. Making the Connections (Network Connection)



Figure 1

For a LAN/Network connection insert your high-speed inter/intra-net connector to the LAN jack on the Back Plane of your Tek Panel 460. (see figure 1).

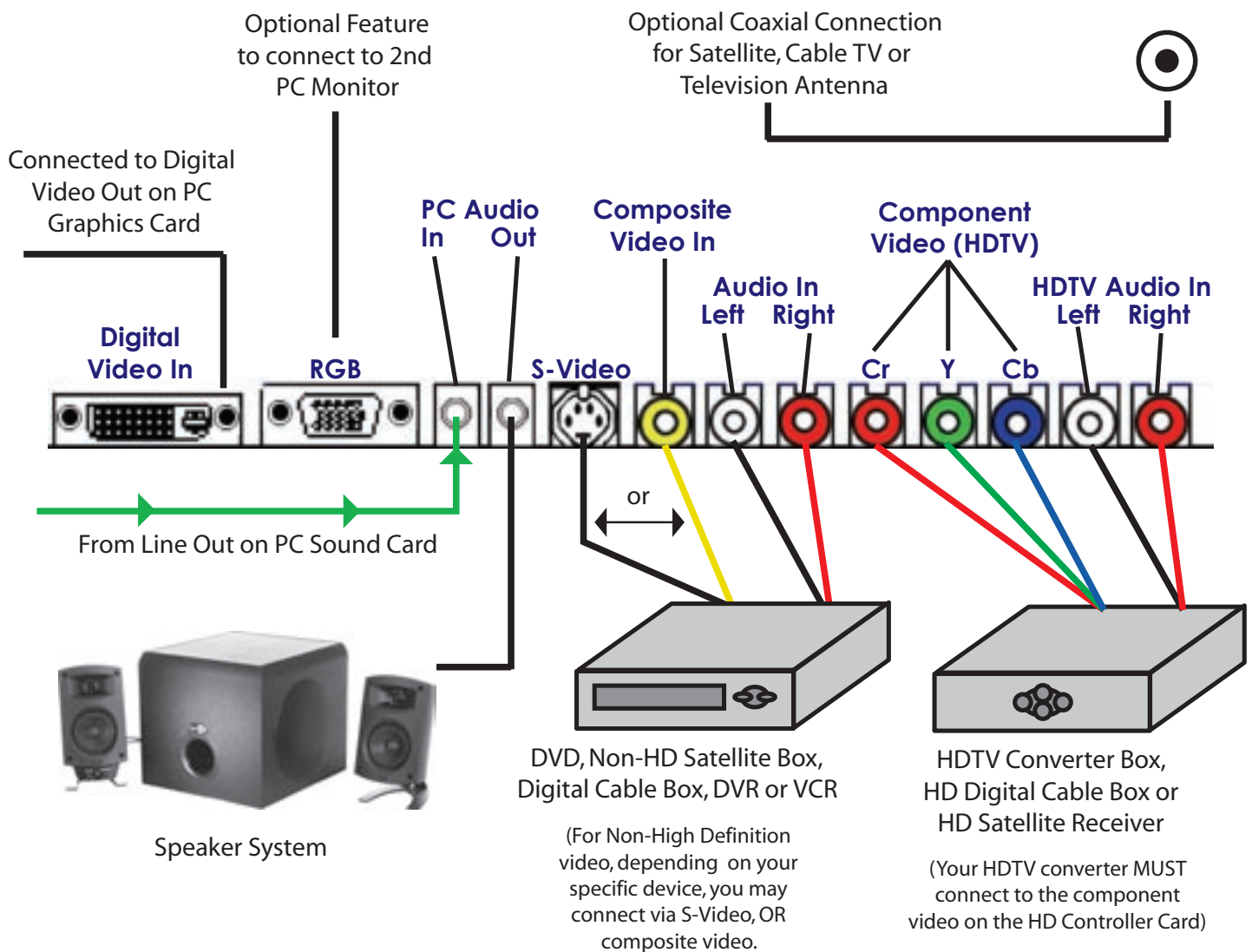
## IV. TV Tuner/Monitor Controller Card

Your new Tek Panel 460 is a state-of-the-art multimedia entertainment system, demonstrating revolutionary convergence of several home entertainment mediums, including HDTV.

In order to display High Definition Television signals (HDTV) on the LCD monitor of your Tek Panel 460, an HDTV Control Board is installed in your system. This section outlines several features and instructions important to note about this special technology.

Your HDTV Controller Card can be used as a PC monitor with TV and/or video board. As the tuner board has a stereo decoder and this board has a stereo amplifier, users simply utilize the luxury monitor plus the TV system.

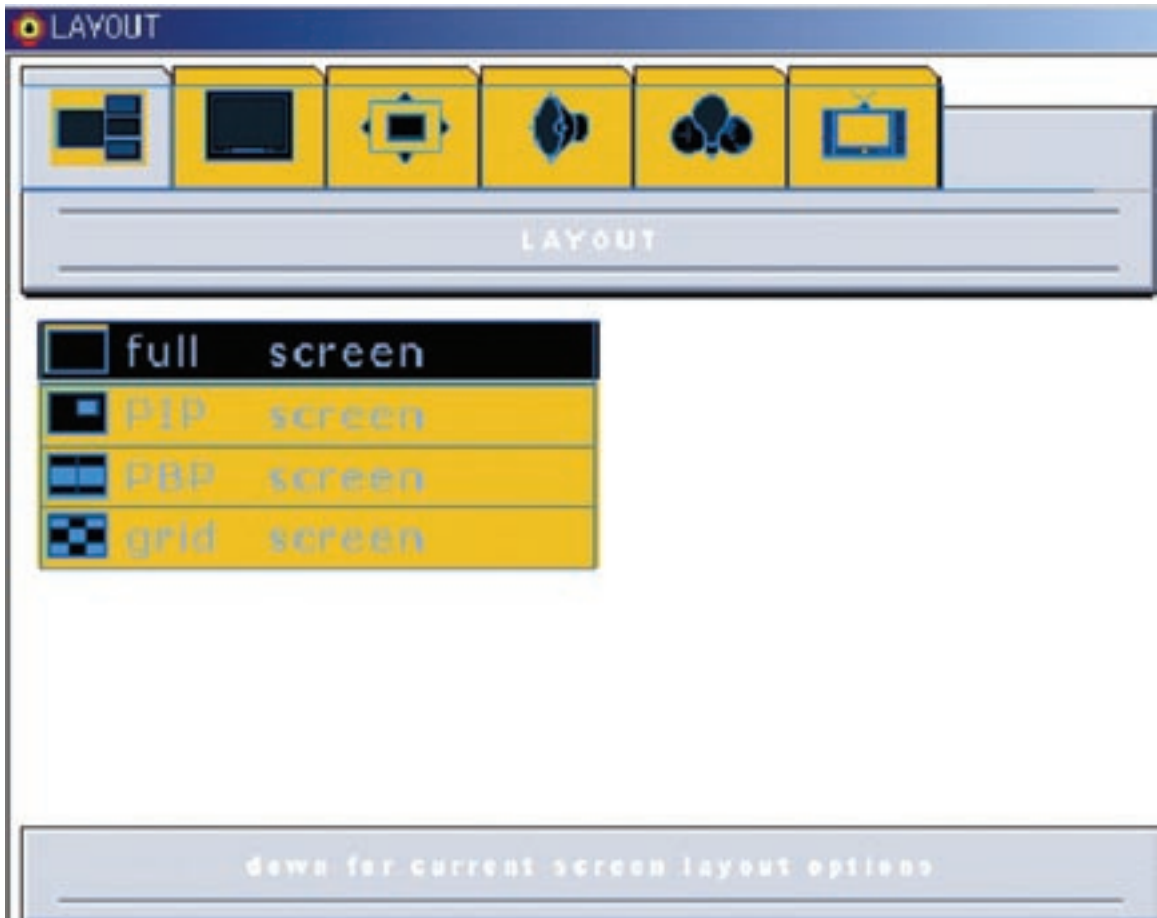
There are three component video input ports, one S-Video port and one composite video input port for standard video.



Some Devices, such as progressive scan DVD players, may also connect via the Component Video/HD inputs for maximum picture quality)

## V. OSD (On Screen Display)

OSD Menu enables user to manipulate the image and settings.



The following settings are available in the LAYOUT Menu :

Select options to determine type of screen display.

- **Full screen** – Activates one window layout
- **PIP screen** – Activates PIP window layout (Picture In Picture)
- **PBP screen** – Activates two window layout (Picture By Picture)
- **Grid screen** – Activates 9 POP window layout

## V. OSD (On Screen Display)

### Audio Menu



The following settings are available in the AUDIO Menu:

Select volume, treble, bass, balance, audio preset and mute duration.

- **Volume** – You can adjust the volume of your PC speakers. The 'right' button makes the sound louder and the 'left' button makes the sound softer.
- **Treble** – The higher frequencies of the audible spectrum. In equalizer terms refers to higher frequencies typically above 4kHz.
- **Bass** – The lower frequencies of the audible spectrum.
- **Balance** – Adjusts the left and/or right volume balance.
- **Audio preset** – You can adjust one among user, movie, news and standard option settings for adjusting audio treble and balance
- **Mute** – You may turn off the left and/or right volume channels by selecting the mute of the Item OSD MENU - AUDIO tab.



## V. OSD (On Screen Display)

### Picture Menu



The following settings are available in the PICTURE Menu:

- **Backlight** – Used to adjust brightness of the screen. (INVERTER Dimming Control)
- **Brightness** –Used to adjust brightness of the screen. Image brightness (ADC for analog signals, PW for digital).
- **Contrast** – Used to adjust distinction (Image noise/clarity). Image contrast (ADC for analog, PW for digital).

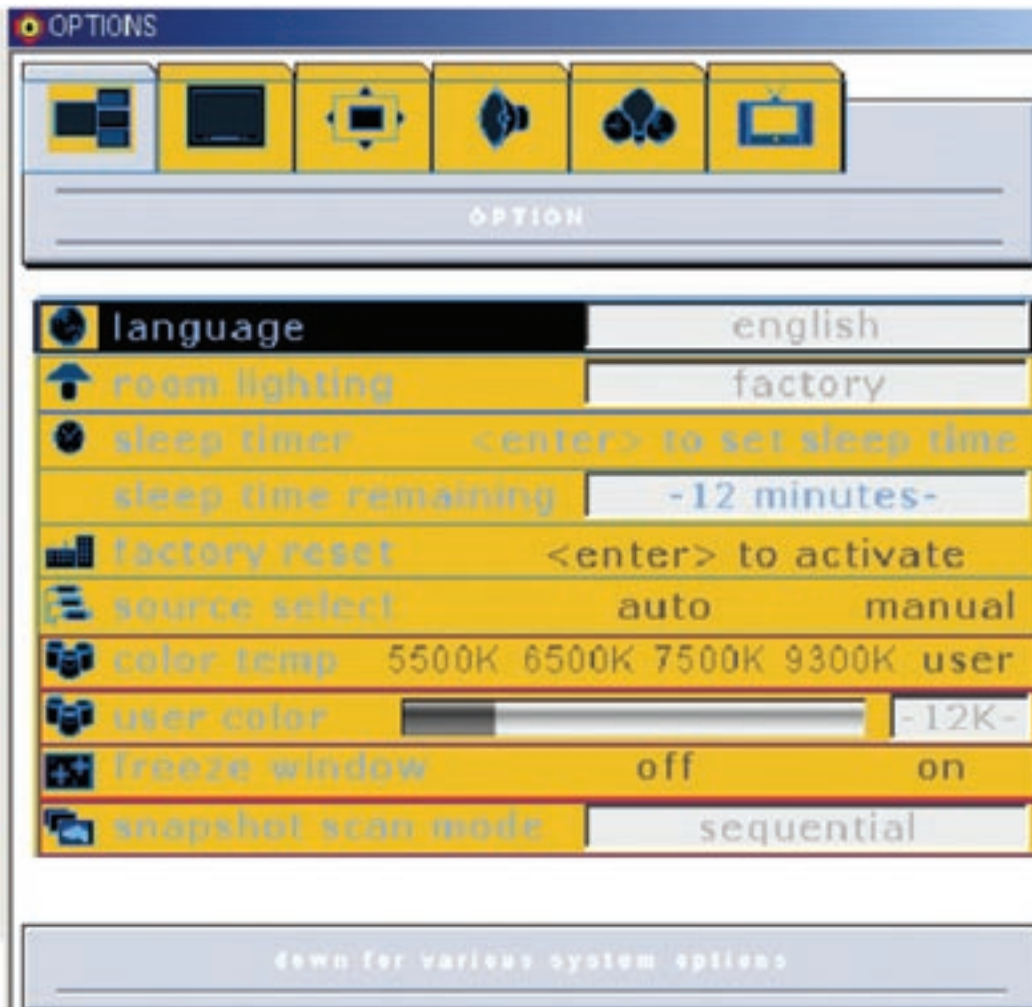
## V. OSD (On Screen Display)

### Picture Menu (Cont)

- **Phase** – Used to adjust the phase of the screen. Use if there is noise or lines are overlapped.
- **Frequency** – Used to adjust horizontal size of the screen by increasing or decreasing number of picture elements.
- **Color** –Used to adjust the display color saturation of the screen. ( Video & TV ).
- **Tint** – Used to adjust the display hue adjustment of the screen. ( Video & TV ).
- **H Position** – Used to move screen right or left. Horizontal image position (not available for digital).
- **V Position** – Used to move screen up or down. Vertical image position (not available for digital).
- **Sharpness** – Adjust the sharpness or to soften the picture.
- **Filter** - Adaptive noise filter spatially reduces the image noise in progressive, full-motion video.
- **Digital pan and zoom** - Adjusts the main window screen size.
  - Use the right/left button to adjust the horizontal position of zoomed window
- **Image Size** – Used to adjust the output image size, making the displayed image larger, smaller or same than the display device.
  - *Fill all* – fill screen.
  - *Fill aspect* – fill screen but maintain aspect ratio.
  - *One to one* – display image in original size (no scaling).
  - *Normal* – fill screen, preserve 4:3 aspect ratio.
  - *Anamorphic* – use non-linear scaling to convert 4:3 to 16:9.
  - *Zoom* – convert letterboxed video to full screen.
  - *Fill 16:9* – expand anamorphically compressed content to 16:9 aspect ratio.
  - *Video game zoom* – Smaller amount of zoom: used for video game sources.

## V. OSD (On Screen Display)

### Options Menu



The following settings are available in the OPTIONS Menu:

- **Language** – OSD language and appearance can be changed.
- **Room lighting** – Change the colors of individual pixels that are all lit if used near fluorescent lighting.
- **Sleep time remaining** – Decreases/Increases sleep timer.
- **Factory reset** – Screen parameters are replaced with the factory default values.
- **Source select** – You can choose between 'auto' and 'manual' for the control source scan behavior.
  - When Source select is manual, you can change sources manually by pressing the SOURCE key.
  - When Source select is auto, the system automatically scans though all the inputs looking for an active source.

## V. OSD (On Screen Display)

### Options Menu (Contd)

- **Color temp** – You can choose one among 5500K, 6500K, 7500K, 9300K and user option. Initial value is set at 7500K.
- **User color** – You can adjust red, green and blue setting for user color temp (grayed out unless color matrix is set to disabled and color temp is set to value other than user).
- **Freeze window** – Freeze window allows you to hold the display image on the screen while refreshing another image.
- **Snapshot scan mode** – The snapshot scan mode in the OPTIONS menu offers you to continually or randomly refresh the image in the screen. (sequential, interleaved and floating)

## V. OSD (On Screen Display)

### OSD and PIP (Picture in Picture) Menu



The following settings are available in the OSD & PIP Menu:

- **OSD background** – You can select the OSD background to be opaque or translucent.
  - makes the OSD background solid or see-through.
- **PIP position** – You can move the PIP position to one of five preset locations.
- **PIP h-Position** – Adjusts the PIP window horizontal position.
- **PIP v-Position** – Adjusts the PIP window vertical position.

- **Closed Caption Mode** – Use the right/left button to select close caption mode
  - All fields 1 and 2 captions (CC1, CC2) and text (T1, T2) channels can be individually selected for display. In addition, XDS data can be displayed for monitoring purposes. This XDS data consists of network name, station name, local time and date, program title and program description.

CC : Check C.C. in advanced settings window of encoder box and check Closed Caption in decoder box to enable Closed Captioning in both encoder and decoder mode.

- **Closed captioning** – Use the right/left button to control close captioning. This feature takes data in the Closed Caption signal line 21 and inserts into the MPEG data stream. Closed caption decoders enable deaf persons to read dialogue on TV programs and can qualify as medical appliances.
- **OSD timeout** – Adjusts the time within which OSD menu disappears. It controls how long the OSD stays up when there are no key presses.

## V. OSD (On Screen Display)

### Video and TV Menu



The following settings are available in the VIDEO & TV Menu:

- **Auto fine tune** – An auto programmed channel can be tuned finely when 'on' is selected
- **Fine tune** – If Auto fine tune is off, this feature can be used to Fine tune manually.
- **Source** – Used to select a video input (antenna, cable, satellite, etc.).
- **Channel scan** – Simply press the enter button to auto scan the channels.
- **Edit channels** – Select "Add" to add current channel to channel table, and select "Remove" to delete current channel from channel table.
- **Sound mode** – You can select a sound mode (stereo, mono).
  - \* stereo – A stereo system has two independent signals, each driven into its own separate speaker.
  - \* mono – A mono system sends the same signal to all of the speakers.