

Turnkey management application suite offering advanced monitoring and control features to IT managers of up to midsize enterprise networks

## OVERVIEW

3Com® Network Director offers IT managers of up to midsize enterprise networks a self-contained, standalone software suite with all the features necessary to monitor and control a secure, converged network infrastructure. While optimized for 3Com network environments, it also provides limited support for a range of non-3Com products.

To simplify the work of IT staff and improve network operation and reliability, functionality includes advanced capabilities such as automated quarantine of infected devices, discovery and mapping of network devices, bulk configuration tools with backup and restore, device set-up wizards, troubleshooting tools that can rapidly locate and fix network problems, and tools that simplify managing 3Com routers or switches.

3Com Network Director also includes 3Com Network Access Manager. Designed for users of Microsoft Active Directory, it simplifies the job of managing network access when using IEEE 802.1X or RADA desktop authentication.

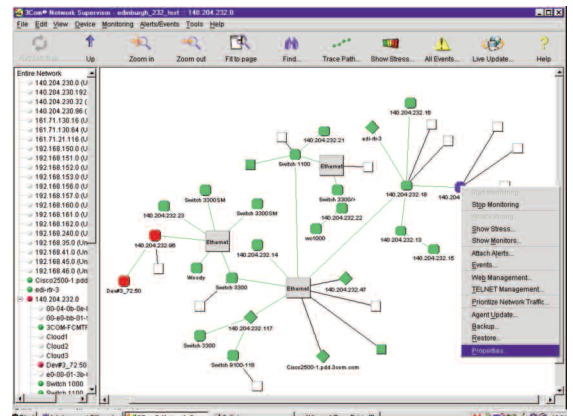
## KEY BENEFITS

### OFFERS TURNKEY MANAGEMENT FOR DIVERSE NETWORKS

3Com Network Director delivers enhanced features for turnkey management on a Windows platform. It is ideal for midsize and smaller sites needing comprehensive network discovery, monitoring, and control. Optimized for 3Com network environments, it provides advanced capabilities to simplify the work of IT staff and improve the network's operation and reliability.

### AUTOMATES BULK TASKS

Advanced capabilities—bulk configuration backup and restore, and software agent update for 3Com LAN and WAN products—simplify the work of IT staff and improve the operation and reliability of the network. Wizard-driven operations allow fast network-wide management of VLANs and switch-port settings.



3Com Network Director: topology interface

## KEY BENEFITS

(CONTINUED)

### **DELIVERS FAST AND EFFECTIVE PROBLEM HANDLING**

IT staff can proactively monitor all network devices, including switches, routers, wireless access points, IP telephony components, end stations, and servers. A comprehensive event log and data path analysis give a clear description and indicate the severity of network problems; sophisticated event logs help identify root causes for these detected network anomalies.

### **AUTOMATICALLY AND RAPIDLY REMOVE INFECTED DEVICES FROM THE NETWORK**

“Find and Remove” searches for rogue devices by MAC or IP address or 802.1X user, finding where a device is connected to the network and simply isolating it. When used in conjunction with a TippingPoint™ Intrusion Prevention System (IPS) and its Security Management System, 3Com Network Director can automatically remove the PC from the network, or alternatively move it into a quarantine VLAN where it can be safely repaired before being allowed back on the network.

### **EASILY CONTROL NETWORK ACCESS AT THE EDGE**

3ND simplifies the deployment of RADA and IEEE 802.1X Network Login at the edge of a 3Com network. All devices (via RADA) or users (via 802.1X) can be authenticated before allowed access to the network. In addition, IP phones can be authenticated and automatically placed in the appropriate voice VLAN when connected to the network.

### **PROVIDES DETAILED PERFORMANCE MONITORING**

Easy-to-use performance-monitoring capabilities detect bottlenecks and other network problems. Historical data indicates trends and helps predict future network performance. For advanced troubleshooting, displays show industry-standard RMON data from switches.

### **ACCURATELY DISCOVER AND MAP NETWORK DEVICES**

Automatic network discovery and mapping includes detailed views at Layers 2 and 3 levels. Highly accurate, detailed depictions—with real-time status updates— show discovered data, voice, and wireless networking equipment, all connecting links, end stations and servers, and VLAN associations of ports and devices.

### **CONFIGURATION MANAGEMENT**

Backup/restore/compare and baseline device configurations to ensure that your network devices remain in their correct configurations. Define device configurations as “baseline configurations” and check and report on any variations from the approved baselines. Define device Baseline Agent Software for 3Com devices on your network. Check and report for equipment that is not running baseline software.

### **FLEXIBLE REPORTING**

Information on network inventory, misconfigurations, optimization suggestions, and device history can be generated in pre-defined reports and in customized versions to meet specific requirements.

### **GRAPHICAL ELEMENT MANAGEMENT**

Switches and routers can be viewed via a graphical interface to simplify element management.

## FEATURE HIGHLIGHTS

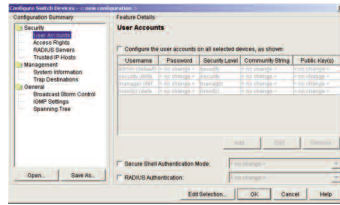
### **Automatic Discovery and Mapping**

3Com Network Director automatically discovers and maps—at both a Layer 3 subnet view or a Layer 2 flat view—all IP devices and links on local or specified subnets, gathering additional management details for 3Com equipment and some common third-party devices.

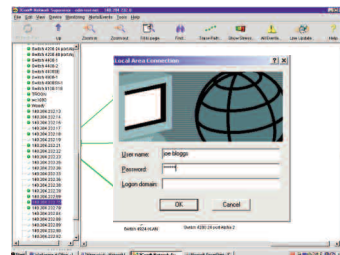
### **Real-Time Network Stress Monitoring**

The software automatically monitors network stress for all key switches and links on the network, as well as the stress levels of end stations, servers, and their links to the core devices. Easy-to-view graphs give users an instant look at network performance data. Experienced users can choose a more detailed view of important parameter values. To make trouble-shooting faster, trace paths clearly show network traffic routes between managed entities.

## FEATURE HIGHLIGHTS (CONTINUED)



For time-saving and flexible bulk configuration, templates for configuring one or multiple features can be created and applied across similar device types in one operation.



Managers can see at a glance the names of people logged onto the network using 802.1X Network Login.

### Efficient Backup and Restore

Bulk backup and restore of 3Com switch configurations saves administrative time and effort.

### Advanced Performance RMON Monitoring

Bottlenecks and network problem areas are easily detected using real-time graphical tools based on industry-standard remote monitoring (RMON) data. The software collects historical information and logs it for analysis.

### Optimized VLAN Management

Viewing the network map by VLAN with a single interface facilitates creation and deletion of VLANs across multiple switches and simplifies the creation of network reports that include VLAN data.

### Bulk Agent Updates

To assure that agent software on 3Com devices is always current, 3Com Network Director simplifies agent version auditing and lets them perform bulk agent updates as needed. They can select to update all of their 3Com products, all products of a certain type, or make custom selections from the current map for maximum management flexibility.

### Converged Network Support

3Com data and voice products can be managed from one interface. The Network Director map shows how IP phones are connected into the wired network and which handsets are managed where—regardless of physical network location.

### Enhanced Security

3Com Network Director simplifies the deployment of RADA and IEEE 802.1X Network Login at the edge of a 3Com network. All devices (via RADA) or users (via 802.1X) can be authenticated before allowed access to the network. In addition, IP phones can be authenticated and automatically placed in the appropriate voice VLAN when connected to the network. “Find and Remove” searches for infected devices by MAC or IP address or 802.1X user, finding where a device is connected to the network and simply isolating it. In addition, Network Director offers real-time visibility of RADIUS servers, clients, and access locations, highlighting potential authentication issues in an array of user-friendly pop-up windows.

### Element Management for Routers and Switches

Device-by-device configuration is intuitive with Network Director’s accurate graphical representation of 3Com routers and switches on the network.

### Flexible Task Scheduling

Key tasks—network discovery, agent upgrade, configuration backup, bulk port or switch settings—can be scheduled to run at regular intervals or at convenient times in the future. If desired, they can run nightly to provide refreshed content every morning.

### Live Updates

With a single button click, 3Com Network Director checks the 3Com website for new Network Director upgrades and available device support for the equipment in the managed network. A simple interface assists in downloading service packs and agent versions for devices.

---

## SPECIFICATIONS

**WORKSTATION**

PC with Network Adapter Card  
(Pentium III 500 MHz minimum;  
1 GHz or higher recommended)

**MEMORY**

512 Mb minimum (1 Gb or higher  
recommended)

**FREE HARD DISK SPACE**

300 Mb minimum (1 Gb or higher  
recommended)

**OPERATING SYSTEMS**

Windows XP, Windows 2000  
Professional, Windows Vista,  
Windows Server 2003 and 2008

---

## 3COM NETWORK ACCESS MANAGER

3Com Network Director also includes 3Com Network Access Manager. A plug-in for Microsoft Active Directory and Microsoft Internet Authentication Service (IAS) users, it simplifies the complexity and associated administrative costs for businesses taking advantage of the security benefits of Network Login (IEEE 802.1X) and RADIUS Authenticated Device Access (RADA).

Read more at [www.3com.com/NAM](http://www.3com.com/NAM).

---

## ORDERING INFORMATION

**PRODUCT DESCRIPTION**

3Com Network Director version 3.0

**3COM SKU**

3CR15500

---

Visit [www.3com.com](http://www.3com.com) for more information about 3Com secure converged network solutions.

3Com Corporation, Corporate Headquarters, 350 Campus Drive, Marlborough, MA 01752-3064  
3Com is publicly traded on NASDAQ under the symbol COMS.

Copyright © 2008 3Com Corporation. All rights reserved. 3Com and the 3Com logo are registered trademarks, and VCX and TippingPoint are trademarks, of 3Com Corporation. All other company and product names may be trademarks of their respective companies. While every effort is made to ensure the information given is accurate, 3Com does not accept liability for any errors or mistakes which may arise. All specifications are subject to change without notice. 400848-005 06/08

